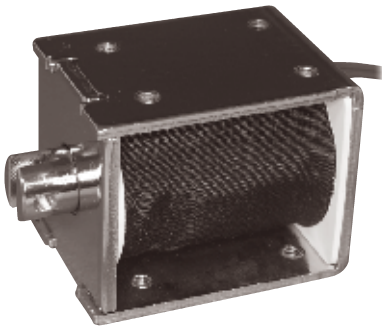
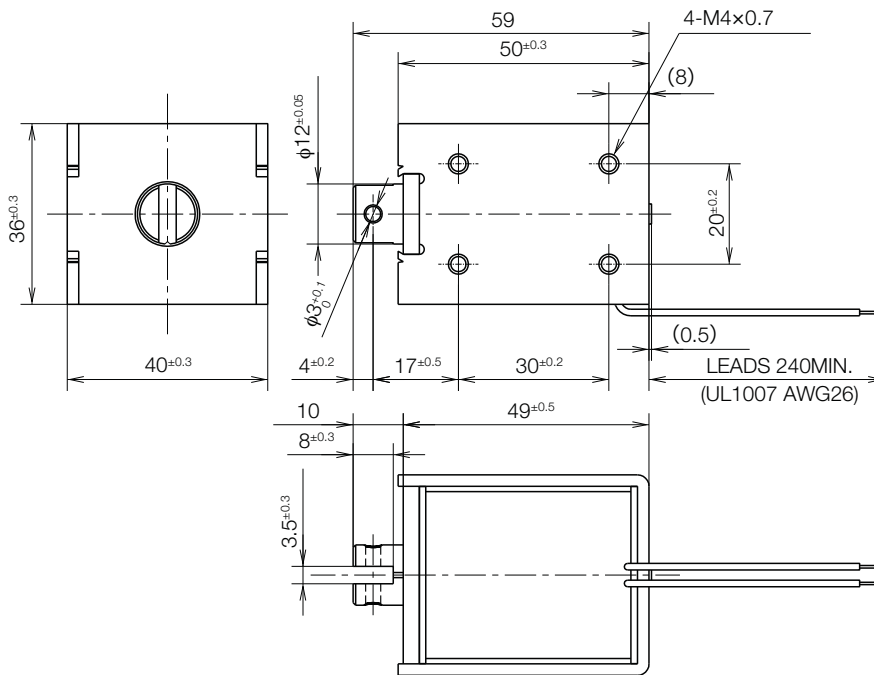
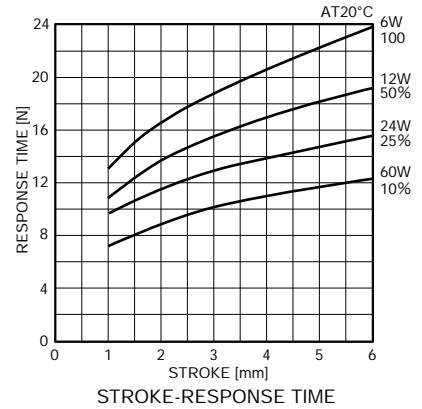
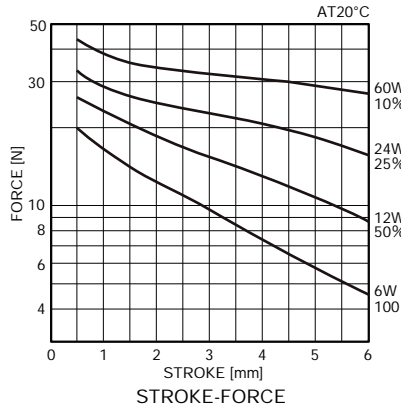


# SK1250W OPEN FRAME SOLENOID

UNIT : mm  
SHOWN ENERGIZED



WEIGHT : 362g  
PLUNGER: 40g



FRAME THK. 2.3mm POSSIBLE EXTRUSION: LESS THAN 1.0mm

## COIL DATA

	without heat sink					
	duty cycle= $\frac{\text{"on" time}}{\text{"on" time} + \text{"off" time}} \times 100\%$	100% continuous	50% or less	25% or less	10% or less	
	MAX. "on" time in seconds	$\infty$	140	50	9	
	watts at 20°C	6.0	12.0	24.0	60.0	
ampere-turns at 20°C	1150	1626	2300	3636		
type no.	resistance $\Omega \pm 10\%$ (at 20°C)	no. turns	volts DC			
SK1250W06AA	6	1100	6	8.5	12	19
SK1250W12AA	24	2370	12	17	24	38
SK1250W24AA	96	4600	24	34	48	76
SK1250W48AA	384	8640	48	68	96	152