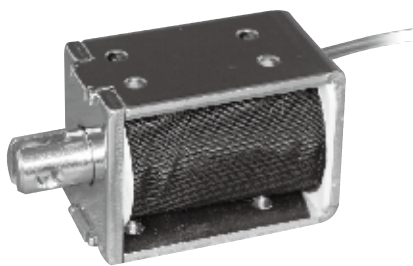
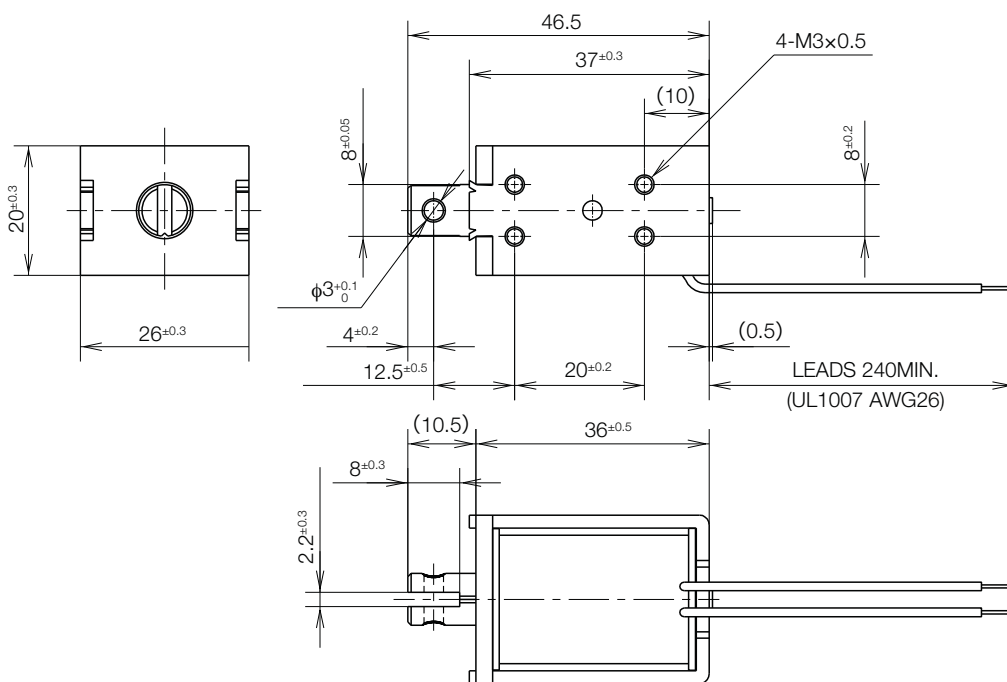
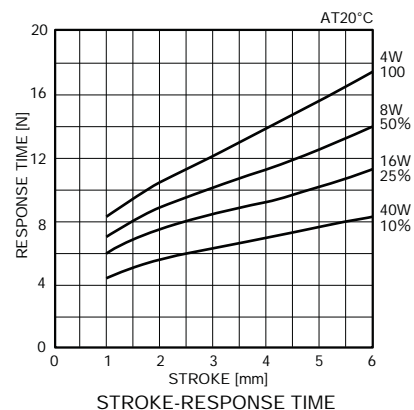
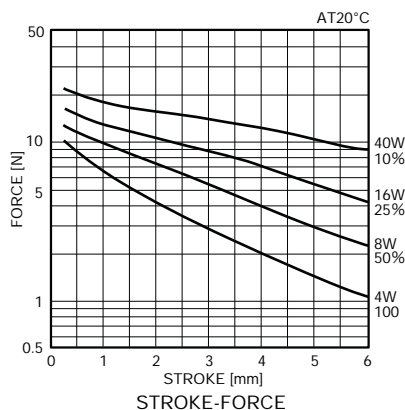


SK0836W OPEN FRAME SOLENOID

UNIT : mm
SHOWN ENERGIZED



WEIGHT : 100g
PLUNGER: 14g



FRAME THK. 2.0mm POSSIBLE EXTRUSION: LESS THAN 0.5mm

Open Frame Solenoids

COIL DATA

without heat sink

type no.	resistance $\Omega \pm 10\%$ (at 20°C)	no. turns	volts DC				
			duty cycle = $\frac{\text{"on" time}}{\text{"on" time} + \text{"off" time}} \times 100\%$	100% continuous	50% or less	25% or less	10% or less
			MAX. "on" time in seconds	∞	100	36	7
			watts at 20°C	4.0	8.0	16.0	40.0
ampere-turns at 20°C			666	941	1332	2106	
SK0836W06AA	9	1000	6	8.5	12	19	
SK0836W12AA	36	2000	12	17	24	38	
SK0836W24AA	144	4000	24	34	48	76	
SK0836W48AA	576	7540	48	68	96	152	