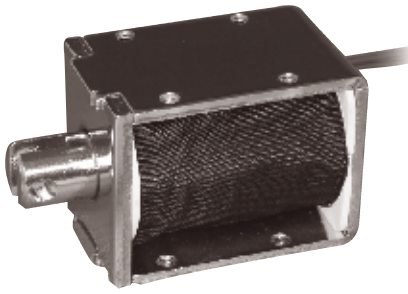
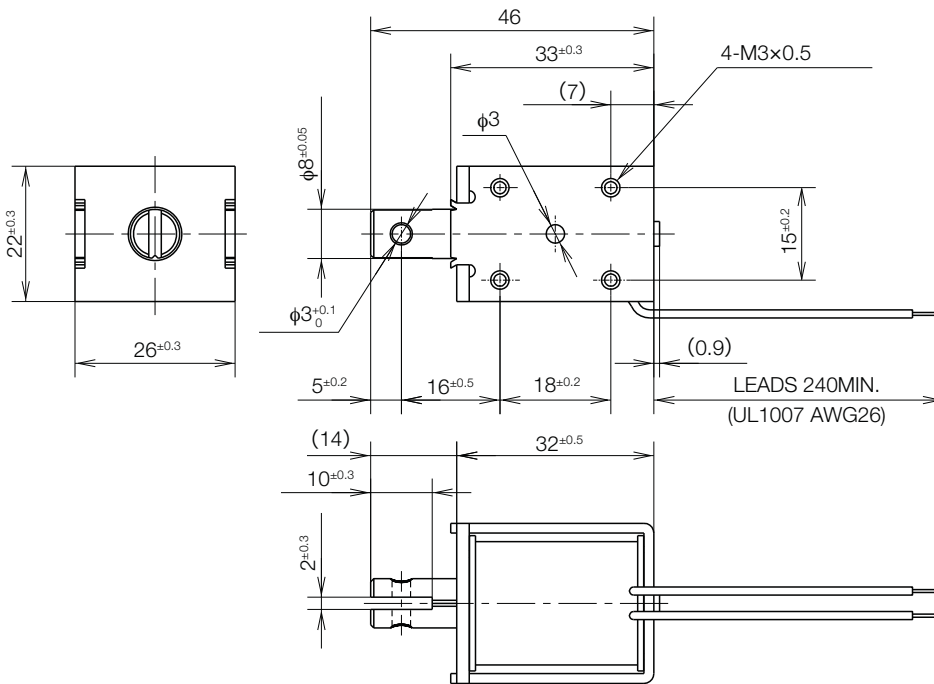
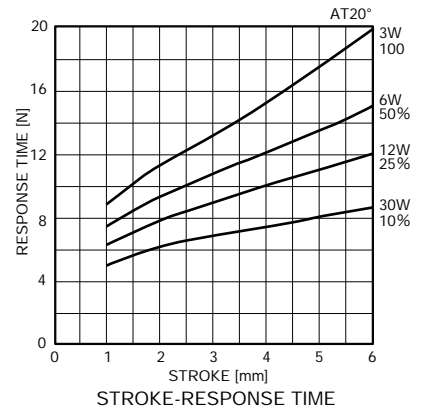
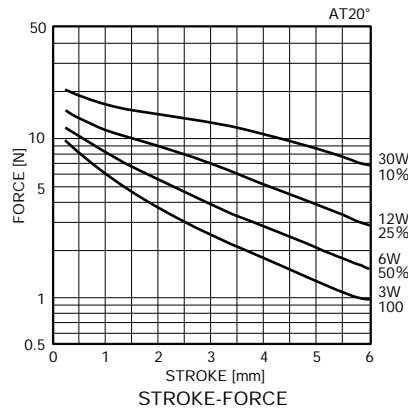


SK0832A OPEN FRAME SOLENOID

UNIT : mm
SHOWN ENERGIZED



WEIGHT : 82g
PLUNGER: 14g



FRAME THK. 1.6mm POSSIBLE EXTRUSION: LESS THAN 0.5mm

COIL DATA

without heat sink

	duty cycle = $\frac{\text{"on" time}}{\text{"on" time} + \text{"off" time}} \times 100\%$		100% continuous	50% or less	25% or less	10% or less
	MAX. "on" time in seconds		∞	100	36	7
	watts at 20°C		3.0	6.0	12.0	30.0
	ampere-turns at 20°C		571	807	1142	1805
type no.	resistance $\Omega \pm 10\%$ (at 20°C)	no. turns	volts DC			
SK0832A06AA	12	1150	6	8.5	12	19
SK0832A12AA	46	2300	12	17	24	38
SK0832A24AA	186	4430	24	34	48	76
SK0832A48AA	743	8410	48	68	96	152