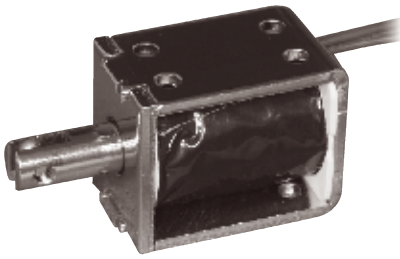
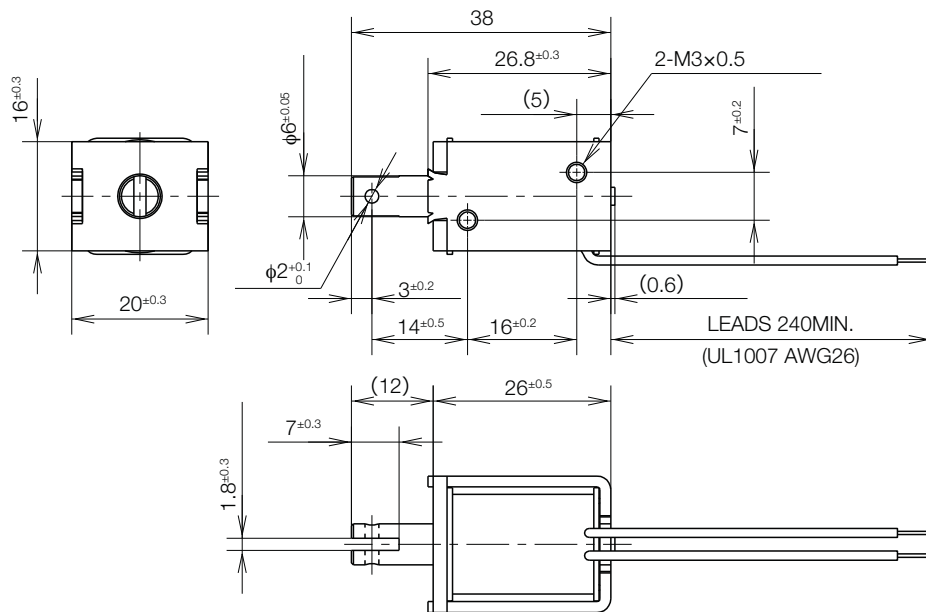
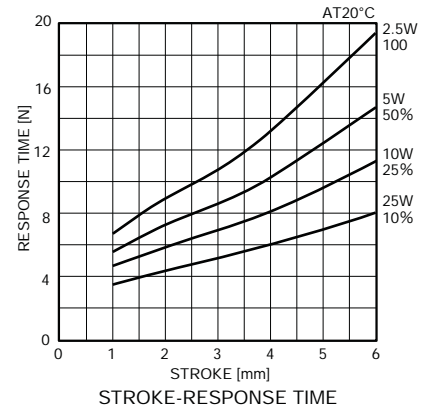
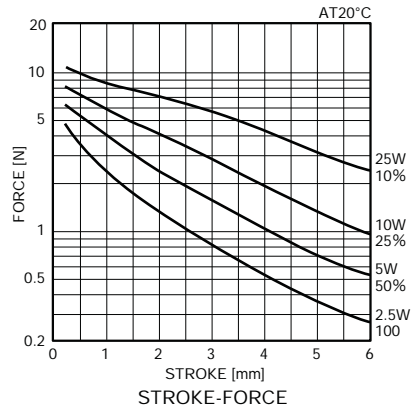


# SK0626A OPEN FRAME SOLENOID

UNIT : mm  
SHOWN ENERGIZED



WEIGHT : 43g  
PLUNGER: 7g



FRAME THK. 1.6mm POSSIBLE EXTRUSION: LESS THAN 0.5mm

Open Frame Solenoids

## COIL DATA

without heat sink

	duty cycle = $\frac{\text{"on" time}}{\text{"on" time} + \text{"off" time}} \times 100\%$		100% continuous	50% or less	25% or less	10% or less
	MAX. "on" time in seconds		∞	100	36	7
	watts at 20°C		2.5	5.0	10.0	25.0
	ampere-turns at 20°C		428	605	856	1353
type no.	resistance $\Omega \pm 10\%$ (at 20°C)	no. turns	volts DC			
SK0626A06AA	14	1090	6	8.5	12	19
SK0626A12AA	58	2090	12	17	24	38
SK0626A24AA	230	4110	24	34	48	76
SK0626A48AA	922	8200	48	68	96	152